

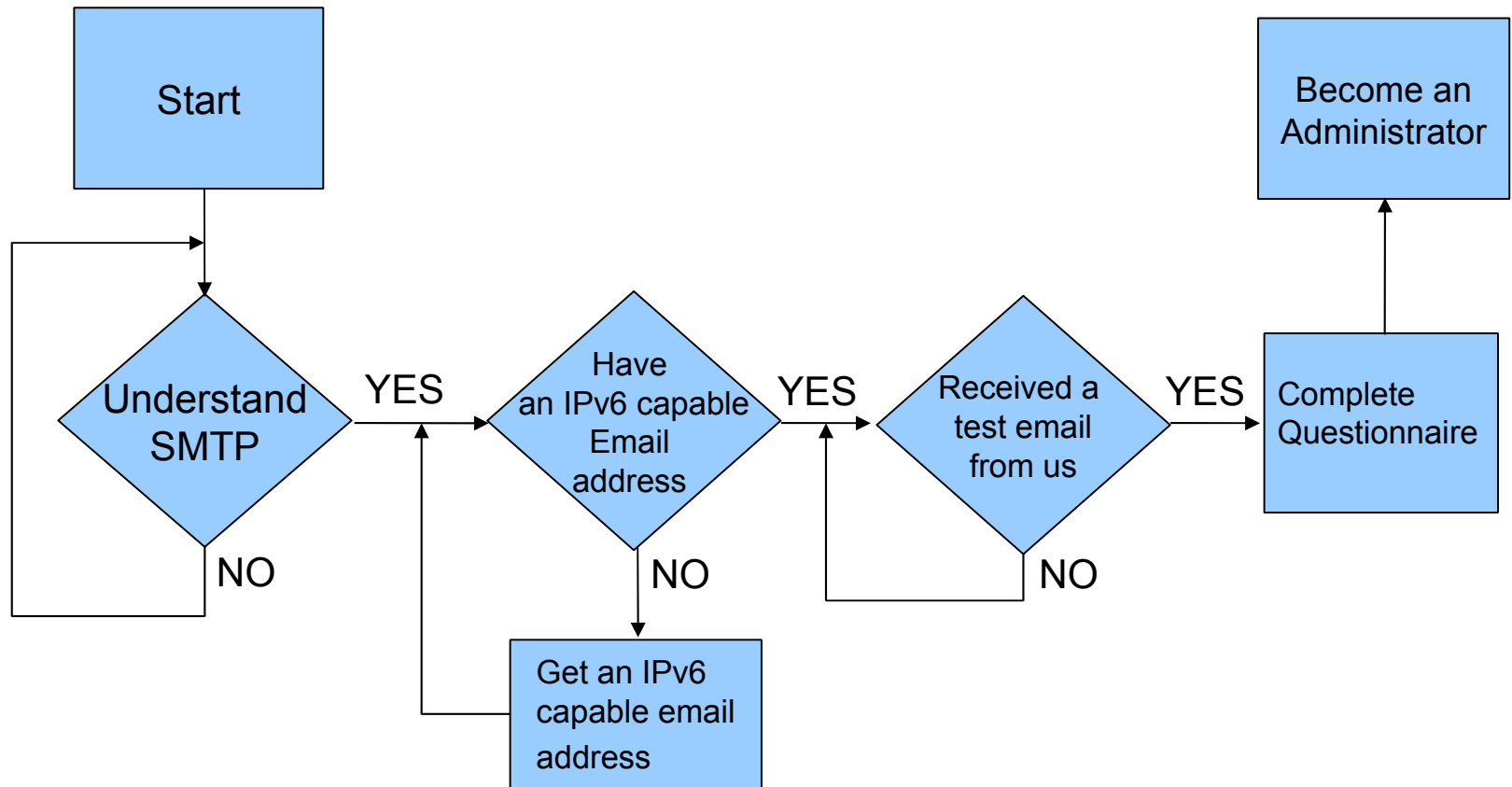
---

# IPv6 Certification Program General Tutorial Session

---

Level - Administrator

# FLOW CHART



# Key Concepts

- SMTP – Simple Mail Transfer Protocol  
Internet standard for Email transmission
- MTA – Mail Transfer Agents
- Port 25 – The MTA relays the mail to the server on DNS record via TCP port 25
- Example of sendmail.mc

Under DAEMON\_OPTIONS

Enable both IPv4 and IPv6 in sendmail:

```
DAEMON_OPTIONS(`Name=MTA-v4, Family=inet, Name=MTA-IPv6, Family=inet6')
```



---

# Test Overview

- Administrator Level checks whether you have a working IPv6 capable MTA or not.
- In order to pass the level, provide an IPv6 capable email address and wait for our email.
- Once received our email, copy and paste the random code and submit it



# Administrator Test Page

## Additional Tests

Enthusiast Technical Test

## Top 10 Certs

[sworseybuck](#) [1,400]  
[kriteknetworks](#) [1,400]  
[prye](#) [1,400]  
[mhwarfield](#) [1,400]  
[klamtest](#) [1,400]  
[kristiankrohn](#) [1,400]  
[brianewell](#) [1,337]  
[strehi](#) [1,230]  
[bmork](#) [1,192]  
[jhaprins](#) [1,188]

## Latest 10 Certs

[certTutor](#) [Enth]  
[miggy](#) [Enth]  
[leev](#) [Sage]  
[PayableOnDeath](#) [Enth]  
[nataliebmason](#) [Newb]  
[parenthephobia](#) [Prof]  
[jsaxe](#) [Admn]  
[vedeker](#) [Newb]  
[kyanhs](#) [Newb]  
[alterboy](#) [Newb]

Print Certificate:



Add your certification to your webpage with this HTML:

```
<a href="http://ipv6.he.net/certification/scoresheet.php?pass_name=certTutor" target="_blank"></img></a>
```

## Administrator

Congratulations, you are an IPv6 Enthusiast! The next step after getting your website online is to make it so you can receive email via IPv6. What you will need is:

- An IPv6 enabled mail system
- Note: If you have "Greylisting" enabled, either whitelist ipv6@he.net or: send, wait for your greylister timer to expire and then reset and send again. We are working on a better solution to this issue.

[Reset Test]

Step	Description	Data
1	Generate a New User Code	<input type="text"/> <input type="button" value="Generate It!"/>
2	Tell us what your IPv6 capable email address is (including the domain):	<input type="text"/>
3	Schedule a test, and we will email you your new User Code	<input type="text"/> <input type="button" value="Send It!"/>
4	Tell us what the code was:	<input type="text"/> <input type="button" value="-&gt;"/>

## Services

[Transit](#)  
[Colocation](#)  
[Dedicated Servers](#)

## v4 Exhaustion

### IPv4 & IPv6 Statistics

v4 Addresses  
469,290,513 ↓

v4 /8s Left  
10% (28/256)

v6 Networks  
4% (1,553/32,194)

v6 Ready TLDs  
79% (222/280)

v6 Glue  
1,387

v6 Domains  
1,539,581 ↑

679

Days remaining



# Administrator Test Page

## Account Menu

[Click For Main Page](#)

[Update Info](#)  
[Top Scores](#)  
[Submit a Blog](#)  
[Review Blogs](#)  
[Trace for more points!](#)  
[DIG AAAA for more points!](#)  
[DIG PTR for more points!](#)  
[Ping6 for more points!](#)  
[IPv6 Whois for more points!](#)  
[Logout](#)

## Additional Tests

[Enthusiast Technical Test](#)  
[Administrator Technical Test](#)

## Top 10 Certs

[kriteknetworks](#) [1,400]  
[sworseybuck](#) [1,400]  
[mhwarfield](#) [1,400]  
[kristiankrohn](#) [1,400]  
[klamtest](#) [1,400]  
[prye](#) [1,400]  
[brianewell](#) [1,337]  
[strehi](#) [1,230]  
[bmork](#) [1,192]

## Administrator Questionnaire

Congratulations you have completed the test: **Administrator Questionnaire**

Your score was 4 OF 4.

Click [Here](#) to return to the main page.

## Quick Links

[Certification](#)  
[Tunnelbroker](#)  
[Forums](#)  
[IPv6 Blog Posts](#)  
[Usage Statistics](#)  
[Network Map](#)  
[Looking Glass \(v4/v6\)](#)  
[Route Server \(telnet\)](#)  
[Global IPv6 Report](#)  
[IPv6 BGP View](#)

## Services

[Transit](#)  
[Colocation](#)  
[Dedicated Servers](#)

## v4 Exhaustion

IPv4 &  
IPv6  
Statistics

v4 Addresses  
469,289,687 ↓  
v4 /8s Left  
10% (28/256)  
v6 Networks



---

# Troubleshoot Method

- Use the following telnet command to see whether TCP port 25 for IPv6 MTA is opened or not

```
:~$ telnet $IPv6AddrOfMX 25
```





---

## Contact:

IPv6 Certification Team  
Hurricane Electric  
760 Mission Court  
Fremont, CA 94539, USA  
<http://ipv6.he.net/certification>  
ipv6 at he dot net  
+1 (510) 580 4100