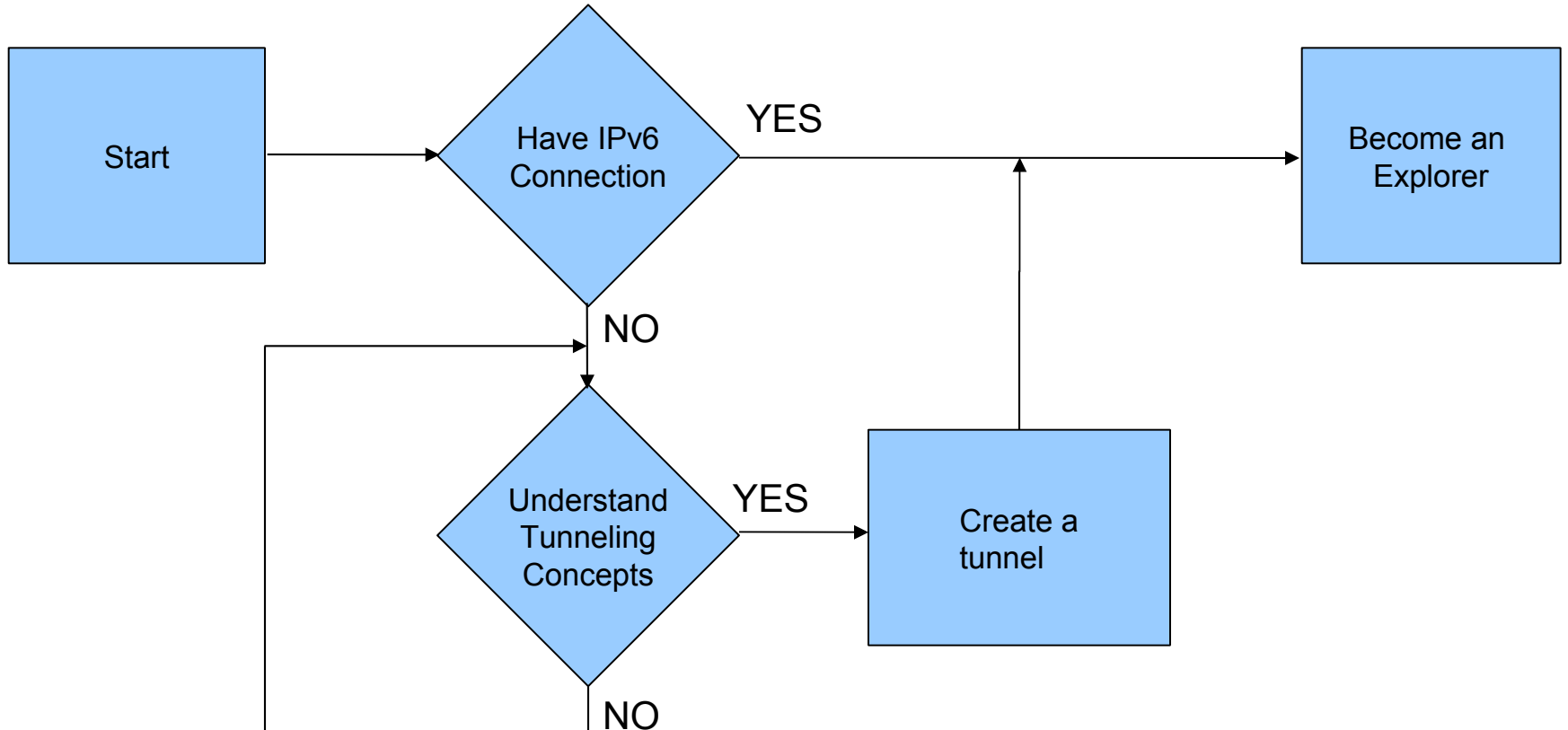

IPv6 Certification Program General Tutorial Session

Level - Explorer

FLOW CHART



Tunneling Concepts for Tunnelbroker users

- Tunneling - Encapsulating mechanism for IPv6 packets within IPv4
- Tunnel Types:
 - 6to4 Tunnels (automatic tunneling)
 - Teredo Tunnels (automatic tunneling)
 - ISATAP (automatic tunneling)
 - 6in4 Tunnels (configured tunneling)
- 6in4 Tunneling - known as configured tunneling. Tunnel endpoints are explicitly configured. It uses Protocol 41 to forward packets



Test Overview

- Explorer Test checks whether you come in from an IPv6 address or not
- In order to pass the level, you must have an IPv6 connection
- Two ways to obtain an IPv6 connection:
 - Native IPv6 connection via ISP
 - Use Hurricane Electric or other Tunnelbroker Service



Explorer Test Page

Account Menu

Click For Main Page

[Update Info](#)

[Top Scores](#)

[Submit a Blog](#)

[Review Blogs](#)

[Trace for more points!](#)

[DIG AAAA for more points!](#)

[DIG PTR for more points!](#)

[Ping6 for more points!](#)

[IPv6 Whois for more points!](#)

[Logout](#)

Additional Tests

None Available at this Level

Top 10 Certs

mhwarfield	[1,400]
klamtest	[1,400]
prye	[1,400]
kriteknetworks	[1,400]
sworseybuck	[1,395]
kristiankrohn	[1,391]
brianewell	[1,334]
jhaprins	[1,186]
strehi	[1,150]
kiklhorn	[1,149]

IPv6 Certification

Name: _____

Updated Badge Images! 2009-04-13 22:56:42

We've added static badge images as an option for people who would prefer a badge for their website that doesn't use Flash.

New Tests Added for Each Level! 2009-04-13 22:55:32

We've added a new series of technical tests for each level. They should show up on the left hand side in your additional tests box.



Static Image



Print Certificate:



Add your certification to your webpage with this HTML:

```
<a href="http://ipv6.he.net/certification/scoresheet.php?pass_name=certTutor" target="_blank"></img></a>
```

Explorer

Now we will need to check if you have IPv6 connectivity:

- Setup Native IPv6 or Tunneled IPv6 using a [Tunnelbroker](#)
- When you are ready, click [this link](#). If you come in from an IPv6 address it will pass you along.

← Click Here to take the test

That's it! Good LUCK!

Quick Links

[Certification](#)
[Tunnelbroker](#)
[Forums](#)
[IPv6 Blog Posts](#)
[Usage Statistics](#)
[Network Map](#)
[Looking Glass \(v4/v6\)](#)
[Route Server \(telnet\)](#)
[Global IPv6 Report](#)
[IPv6 BGP View](#)

Services

[Transit](#)
[Colocation](#)
[Dedicated Servers](#)

v4 Exhaustion

IPv4 & IPv6 Statistics

v4 Addresses

452,116,883 ↓

v4 /8s Left

11% (30/256)

v6 Networks

4% (1,513/32,064)

v6 Ready TLDs

78% (220/280)

Explorer Test Page

Account Menu

[Click For Main Page](#)

[Update Info](#)
[Top Scores](#)
[Submit a Blog](#)
[Review Blogs](#)
[Trace for more points!](#)
[DIG AAAA for more points!](#)
[DIG PTR for more points!](#)
[Ping6 for more points!](#)
[IPv6 Whois for more points!](#)
[Logout](#)

Additional Tests

None Available at this Level


Top 10 Certs

kriteknetworks	[1,400]
mhwarfield	[1,400]
klamtest	[1,400]
sworseybuck	[1,400]
prye	[1,400]
kristiankrohn	[1,393]
brianewell	[1,335]
jhaprins	[1,186]
strehi	[1,160]
kiklhorn	[1,149]

IPv6 Certification

IPv6 Certifications

Welcome to the Hurricane Electric IPv6 Certification Project validation code generator.

Your reported Internet Protocol Address is: 2001:470:

Congratulations, you have IPv6 connectivity.

Click [Here](#) to continue with your certification

Quick Links

[Certification](#)
[Tunnelbroker](#)
[Forums](#)
[IPv6 Blog Posts](#)
[Usage Statistics](#)
[Network Map](#)
[Looking Glass \(v4/v6\)](#)
[Route Server \(telnet\)](#)
[Global IPv6 Report](#)
[IPv6 BGP View](#)

Services

[Transit](#)
[Colocation](#)
[Dedicated Servers](#)

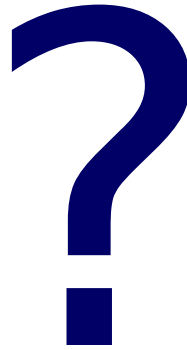
v4 Exhaustion

IPv4 &
IPv6
Statistics

v4 Addresses
450,874,224 ↓

v4 /8s Left
11% (30/256)

v6 Networks
4% (1,522/32,076)



Contact:

IPv6 Certification Team
Hurricane Electric
760 Mission Court
Fremont, CA 94539, USA
<http://ipv6.he.net/certification>
ipv6 at he dot net
+1 (510) 580 4100